



TRITON COLLEGE FALL 2025

President's Snapshot

Pathway to Success



ARTS, HUMANITIES,
AND SOCIAL SCIENCES



BUSINESS AND
INFORMATION
TECHNOLOGY



CAREER AND
TECHNICAL



CULINARY ARTS
AND HOSPITALITY



HEALTH
SCIENCES

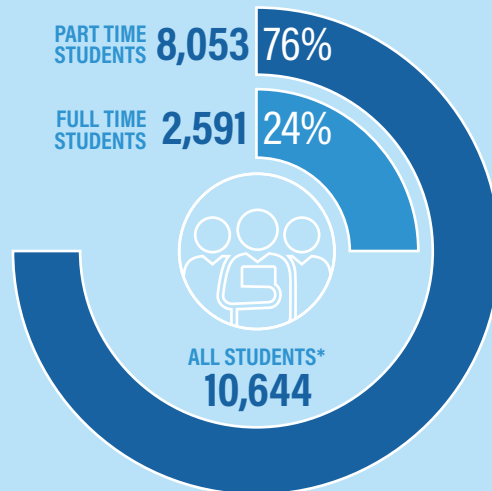


HUMAN AND
PUBLIC SERVICES



SCIENCE AND
ENGINEERING

Headcount Fall 2024



Race/Ethnicity: Fall 2024 All Students

	HEAD COUNT	
ASIAN	271	3%
BLACK OR AFRICAN AMERICAN	1371	13%
HISPANIC/LATINO	4892	46%
WHITE	3340	31%
OTHER/NO RESPONSE	770	7%



HSI

Hispanic Serving Institution

Enrollment By:

Community

MELROSE PARK	MAYWOOD
OAK PARK	FRANKLIN PARK
ELMWOOD PARK	

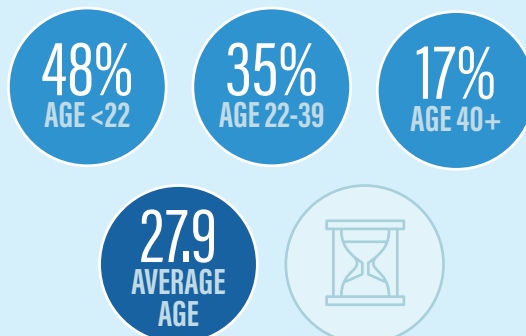
Location

	HEADCOUNT %
ONLINE	18%
OFF CAMPUS	24%
ON CAMPUS	58%

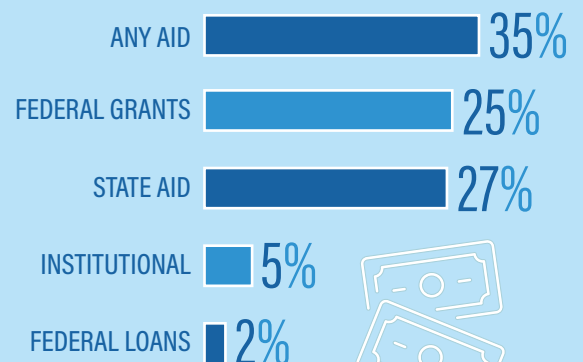
Off Campus

	HEADCOUNT %
DUAL CREDIT	63%
FACILITY ENGINEERING TECHNOLOGY	20%
NON-CREDIT	14%
CLINICAL/INTERNSHIPS	3%

Age (All Students Fall 2024)



% of Students Receiving Some Form of Financial Aid in 2023-24



* STRATEGIC PLAN KPI



Early College Students (Dual Credit, Dual Enrollment) Enrolled at Triton after High School Graduation

% ENROLLED AT TRITON



2022



2023



2024

HS GRADUATION YEAR

Dual Credit Outcomes 2025



3,606 DUAL CREDIT STUDENTS
ENROLLED IN FISCAL
YEAR 2025



56% INCREASE FROM
FISCAL YEAR 2021



Fall to Fall Retention Rate of First Time Students*

FULL TIME

60%

69%

68%

PART TIME

42%

46%

44%

Fall 2021

Fall 2022

Fall 2023

COHORT



Graduation Rate*

COHORT

STUDENT GROUP

	FALL 2019		FALL 2020		FALL 2021	
	COMPLETERS	RATE	COMPLETERS	RATE	COMPLETERS	RATE
Black or African American	13	13%	15	21%	10	10%
Hispanic/Latino	139	33%	104	26%	138	30%
White	110	46%	83	36%	81	38%
Overall	286	35%	220	29%	248	29%

Completions in FY25

938

ASSOCIATE DEGREE

1145

CERTIFICATE

462

NON-CREDIT PROGRAM

75

HIGH SCHOOL EQUIVALENCY
CERTIFICATION IN ILLINOIS
(GED)

128

GENERAL EDUCATION
CORE CURRICULUM
CREDENTIAL (GECC)



Top Five 4-Year Institutions Triton Students Transferred to in 2024

UNIVERSITY OF ILLINOIS AT CHICAGO

ELMHURST UNIVERSITY

DOMINICAN UNIVERSITY

NORTHEASTERN ILLINOIS UNIVERSITY

ILLINOIS STATE UNIVERSITY



TRITON COLLEGE FALL 2025

President's Snapshot



HISPANIC-SERVING
INSTITUTION

* STRATEGIC PLAN KPI